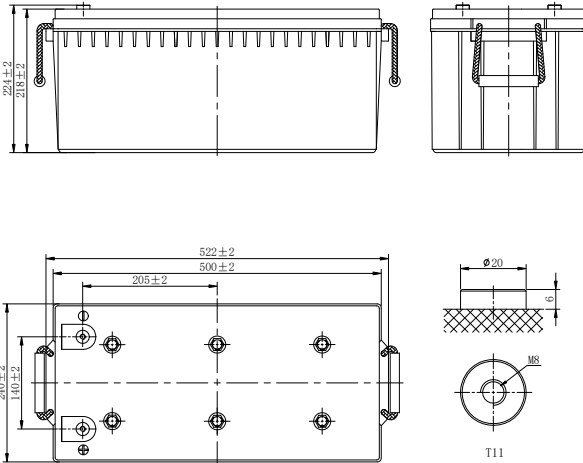


MPGS SERIES-HYBRID GEL BATTERY

MPGS12-200 (12V200Ah)



CHARACTERISTICS

Item	Specifications	
Rated Voltage	12V	
Nominal Capacity (25°C)	C ₂₀ : 1.75V/cell	200Ah
Dimension	Length	522mm (20.6inches)
	Width	240mm (9.45inches)
	Container Height	218mm (8.58inches)
	Total Height	224mm (8.82inches)
Approx Weight	60.9kg (134.3lbs)	
Terminal	T11(M8)	
Container Material	ABS (UL94 HB or V-0 optional)	
Short-circuit current	3640A	
Internal Resistance (25°C)	Approx 3.2 mΩ (Fully charged)	
Operating Temp. Range	Discharge	-20~55°C (-4~131°F)
	Charge	0~40°C (32~104°F)
	Storage	-20~50°C (-4~122°F)
Nominal Operating Temp. Range	25±3°C (77±5°F)	
Max.Charging Current (25°C)	0.25C	
Charge voltage (25°C)	Standby Use	Cycle Use
	2.25-2.30V/cell	2.35-2.40V/cell
Temp. Coefficient	-3mV/cell/°C	
	40°C (104°F)	103%
Effect of temp. to Capacity	25°C (77°F)	100%
	0°C (32°F)	86%
	≤3% per month at 25°C (77°F). MPGS series batteries can be stored up to 6 months at 25°C (77°F) and then a freshening charge is required. For higher temperatures the time interval will be shorter.	
Self Discharge		

DISCHARGE TABLE

Constant Current Discharge (Amperes) at 25°C (77°F)												
F.V/Time	1h	2h	3h	4h	5h	6h	8h	10h	20h	48h	72h	100h
1.90V/cell	88.5	55.8	42.6	34.9	29.4	25.3	19.7	16.2	8.68	3.87	2.63	1.90
1.85V/cell	105.8	62.5	46.8	38.0	32.0	27.6	21.5	17.7	9.52	4.18	2.85	2.08
1.80V/cell	114.4	65.9	49.0	39.4	33.1	28.4	22.2	18.2	9.76	4.31	2.95	2.15
1.75V/cell	120.2	68.8	50.6	40.6	33.8	29.0	22.6	18.6	10.0	4.38	2.99	2.19

Constant Power Discharge (Watts/cell) at 25°C (77°F)												
F.V/Time	1h	2h	3h	4h	5h	6h	8h	10h	20h	48h	72h	100h
1.90V/cell	173.3	110.0	84.7	69.5	59.0	50.8	39.5	32.4	17.3	7.74	5.25	3.80
1.85V/cell	205.1	122.1	92.1	75.1	63.7	54.8	42.8	35.3	19.0	8.37	5.71	4.18
1.80V/cell	219.6	127.7	96.0	75.5	65.5	56.3	44.1	36.2	19.5	8.60	5.89	4.30
1.75V/cell	230.0	132.8	98.8	79.5	66.6	57.3	44.7	36.8	19.9	8.76	5.98	4.38

MPGS SERIES-HYBRID GEL BATTERY

MPGS12-200 (12V200Ah)

APPLICATIONS

- Solar energy (wind energy) household system/ communication/ communication base station
- Movable energy storage system
- Solar traffic lights
- Solar, wind and solar power generation
- Emergency lighting system

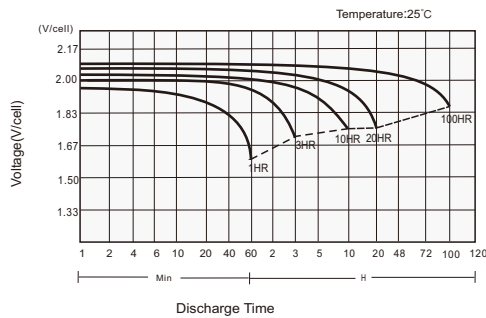
GENERAL FEATURES

- Proven AGM-GEL technology
- Excellent deep discharge recovery and cyclability
- Very low maintenance: no water addition
- Low self-discharge rate

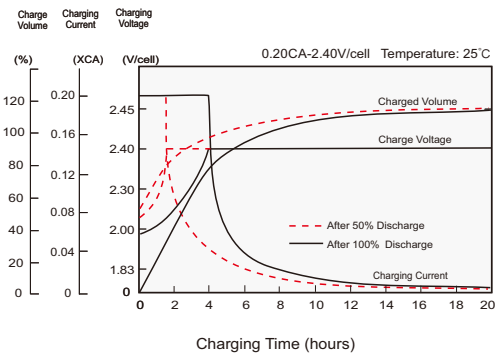
STANDARDS

- IEC60896 Certified
- Classified as "Long Life" according to Eurobat
- UL, CE Approved

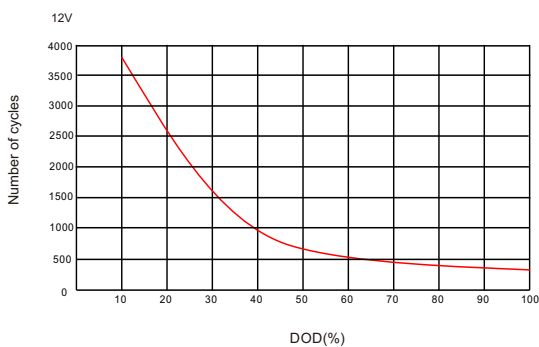
Discharge Characteristics



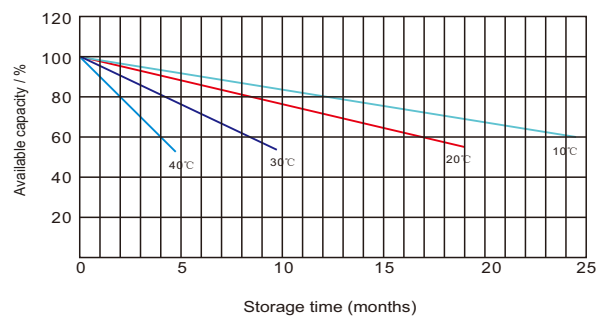
Charging Characteristics



Cycle Life in Relation to DoD



Self Discharge Characteristics



Head Office in MARSTECH SYSTEMS PTE LTD
Block 24, Sin Ming Lane #05-107 Midview City
Singapore

Manufacture in ANHUI LEOCH POWER SUPPLY CORP
No.1, Yingchun Road, Suixi Economic Development Zone,
Suixi Country, Huaibei City, Anhui Province,
P.R.China

Manufacture in LEOCH ACCUPOWER (M) SDN BHD
Lot 13338 & 2493, Jalan Sukeppi, Kawasan Perindustrian,
Jenjarom 42600 Kuala Langat, Selangor Darul Ehsan,
Malaysia